

BAU DIR DEINE

„MÄNNER- KÜCHE“

only
0,5m²
per module



**MADE IN
GERMANY**

OPTIMISE YOUR BIKE WORKSHOP WITH OUR NEW WORKSHOP SYSTEM



WORKBENCH

size: 89 x 100 x 50 cm (HxWxD)
- max. load capacity 100 kg
- weight 30 kg
code 720801 blue
code 720851 anthracite
MSRP: 599,00 €



WORKBENCH + 1 DRAWER

size: 89 x 100 x 50 cm (HxWxD)
- with pull-out | 1 drawer
- weight 38 kg
code 720808 blue
code 720858 anthracite
MSRP: 699,00 €



WORKBENCH + 4 DRAWER

size: 89 x 100 x 50 cm (HxWxD)
- Drawers with full-extension runners
- Mutual drawer locking mechanism
- weight 57 kg
code 720806 blue
code 720856 anthracite
MSRP: 1.099,00 €



WORKBENCH WITH CABINET

size: 89 x 100 x 50 cm (HxWxD)
- 2 doors, 2 shelves
- weight 70 kg
code 720807 blue
code 720857 anthracite
MSRP: 1.199,00 €



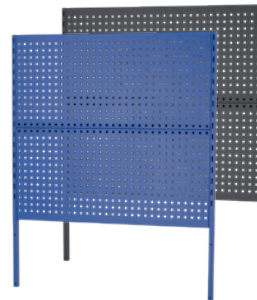
WORKBENCH + WASTE CONTAINER

size: 89 x 100 x 50 cm (HxWxD)
- 3 Containers and retaining rails
- Volume container 75 litres
- weight 44 kg
code 720809 blue
code 720859 anthracite
MSRP: 799,00 €



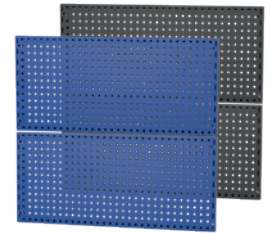
WORKBENCH + WASTE CONTAINER + DRAWER

size: 89 x 100 x 50 cm (HxWxD)
- 3 Containers and retaining rails
- Volume container 75 litres
- 1 Drawer
- weight 52 kg
code 720819 blue
code 720869 anthracite
MSRP: 1.099,00 €



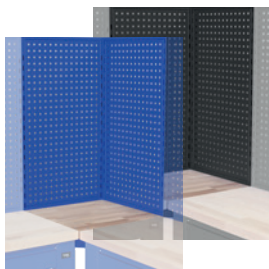
PERFORATED PANEL

size: 89 x 100 x 3 cm (HxWxD)
- Hole grid Q10 32
- suitable for all CYCLUS TOOLS hooks & holding rails
- attachment directly to workbench
- weight 10 kg
code 720810 blue
code 720860 anthracite
MSRP: 149,00 €



PERFORATED PANEL

size: per 45 x 100 x 3 cm (HxWxD)
- Hole grid Q10 32
- suitable for all CYCLUS TOOLS hooks & holding rails
- wall-mounted attachment
- weight 4.5 kg per pegboard
code 720820 blue
code 720824 anthracite
MSRP: 159,00 €



CORNER MODULE

size: 89 x 50 x 50 cm (HxBxT)
- Hole grid Q10 32
- Can be linked across corners
- weight 25 kg
code 720813 blue
code 720862 anthracite
MSRP: 479,00 €



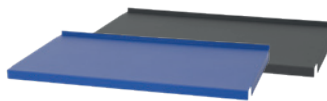
TELESCOPIC ATTACHMENT

Storage for tyres, frames, etc.
size: 80 x 100 x 3 cm (HxWxD)
- Square steel tube
- Mounting directly on perforated wall
- suitable for hook 720818
- weight 3,6 kg
code 720817 blue
code 720863 anthracite
MSRP: 85,00 €



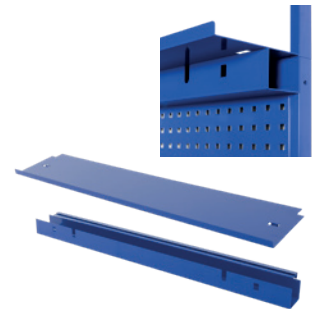
SINGLE HOOK

Storage for tyres, frames
Length: 400 mm
- Telescopic Attachment
720817, 720863
code 720864 anthracite
MSRP: 17,95 €



SHELF

size: 4 x 80,5 x 47 cm (HxWxD)
- for workbench (720801 / 720851)
code 720816 blue
code 720866 anthracite
MSRP: 49,95 €



MEDIA-BOARD

size: 8 x 100 x 20 cm (HxWxD)
- for electricity, air, network
- Storage board 100 x 20 cm
- weight 5,8 kg
code 720811 blue
code 720861 anthracite
MSRP: 75,00 €



**WERKSTATT-
SYSTEM 500 BLAU ODER
ANTHRAZIT**

**DESIGN YOUR
WORKBENCH**

You can modify your workbench at a later date. If you need more space for tools, then add the workbench with 1 or 4 drawers. You need a cupboard for storing parts or want to conveniently sort your waste, then there is also the option of an upgrade here. With little effort, your workbench is ready for new tasks.



**BASIC-
WORKBENCH**

WORKBENCH
size: 89 x 100 x 50 cm (HxBxT)
- max. load capacity 100 kg
- weight 30 kg
code 720801 blue
code 720851 anthracite
MSRP 599,00 €

UPGRADES



UPGRADE 1 DRAWER
- for workbench 720801
- drawers with full extension
- roller bearingst
code 720802 blue
code 720852 anthracite
MSRP 209,00 €



UPGRADE 4 DRAWER
- for workbench 720801
- drawers with full extension
- roller bearingst
code 720803 blue
code 720853 anthracite
MSRP 649,00 €



UPGRADE CABINET
- for workbench 720801
- 2 doors, 2 shelves
code 720804 blue
code 720854 anthracite
MSRP 699,00 €



UPGRADE WASTE CONTAINER
- for workbench 720801
- 3 Containers and retaining rails
- Volume container 75 litres
code 720805 blue
code 720855 anthracite
MSRP 349,00 €



HOOK 50 MM
code 720649
MSRP: 12,95 €



HOOK 100 MM
code 720651
MSRP: 13,50 €



DOUBLE HOOK 50 MM
code 720650
MSRP: 14,60 €



DOUBLE HOOK 100 MM
code 720652
MSRP: 16,95 €



ROUND CAN HOLDER
code 720653
MSRP: 15,40 €



PLIERS HOLDER
code 720660
MSRP: 15,45 €



DRILL HOLDER
code 720659
MSRP: 19,45 €



HOLDER SCREW DRIVERS
code 720657
MSRP: 26,15 €



SPOKES HOLDER
for wall stand
including cup
code 720654
MSRP: 15,40 €



HOLDER
for combination wrenches
code 720658
MSRP: 19,79 €



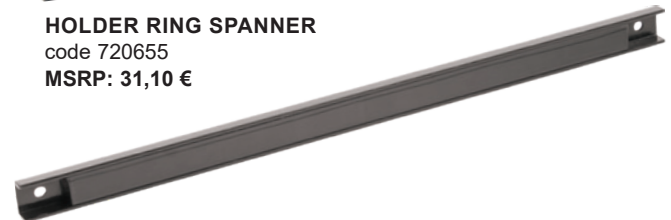
HOLDER SMALL PARTS
code 720656
MSRP: 29,95 €



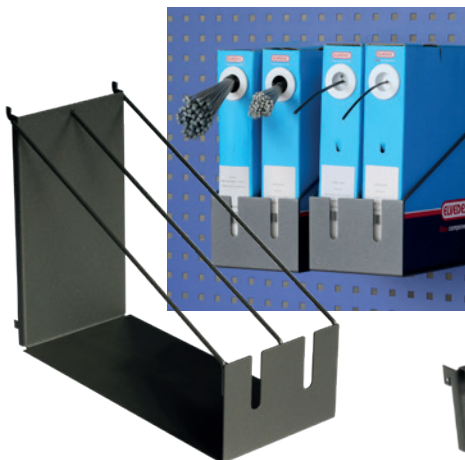
HOLDER RING SPANNER
code 720655
MSRP: 31,10 €



All holder are fixed in the stand with a plastic pin.



MAGNETIC CLAMP
to fix tools
length 470 mm
code 720661
MSRP: 22,80 €



HOLDER FOR CABLE DISPENSER UNIT
for organising and sorting of Bowden dispenser boxes for mounting on the perforated wall
code 720814
MSRP: 39,90 €



HOLDING RAIL
- for 9 stacking boxes 720815
- for perforated wall Art. 720810,720860
- anthracite
code 720812
MSRP: 19,90 €



STACKING BOX
size: 7 x 10 x 15 cm (HxBxT)
- for holding rail 720812
- suitable for drawers
- Load capacity: up to 3 kg
- black
code 720815
MSRP: 7,89 €



only
0,5m²
per module

The complete workshop 'Ingo' is the perfect start for setting up your workshop.

It offers everything you need to keep tools, parts and consumables organised and within easy reach. With 1.5 m² of work surface, there is enough space for repairs on the workbench. The generous 2.6 m² perforated wall area and 4 drawers with full-extension runners accommodate your tools. The spacious cupboard stores small parts and consumables. Three telescopic extensions with 6 hooks extend the workshop upwards and store tyres or frames. More storage space is not possible. The workshop only requires 1.5 m² of floor space. If you would like to expand your workshop at a later date, the Cyclus Tools workshop system offers you plenty of options. Our staff will be happy to advise you.

Features:

- A work area only 50 cm deep saves space
- High-quality material
- made from 1.4 mm / 0.8 mm thick sheet metal
- Solid beech wood top: 40 mm thick, durable and robust
- Drawers: equipped with ball bearing mounted full extension runners
- Levelling feet: ensure stability
- Workbenches can be linked together



COMPLETE WORKSHOP "INGO"
site: 2,59 x 3,0 x 0,5 m (HxBxT)
color: blau
code 720899



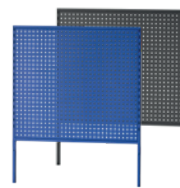
Workbench



Workbench with 4 Drawers



Workbench with cabinet



3 Perforated walls



3 Telescopic attachments 6 hooks



3 Media-Boards



WORKSHOP STOOL "CREEPER 2.0"

height adjustable, movable
incl. tooltray
+ 2 bottle holders.
Ideal sitting during small repairs,
adjusting or cleaning works on bike.

code 720669
MSRP: 168,90 €



ANTI-SLIPPERY RUBBER FEET

50 mm for "Creeper 2.0"

set of 5 pieces
code 720679

MSRP: 14,95 €



TOOL TROLLEY

with 5 lockable drawers
820 x 615 x 425

code 720560

MSRP: 855,50 €

CUSTOM PRINTABLE FLOOR TILES

The PVC floor tile has a new type of puzzle interlocking, making it easy to lay the tile, edge and corner strips. Shock-absorbing, sound-insulating and heat-insulating properties ensure a safe and comfortable working environment in your workshop or warehouse. The material is a high-quality recycled plastic.



Motif example "Cyclus Tools" with 2 floor tiles

PVC INDUSTRY FLOOR TILE SET 10 PIECES

incl. individual printing, printing color white
Highly abrasion-resistant and durable
for store or workshop
plastic, anthracite, 50 x 50 x 0,7 cm
matches floor tile 730021 & edging strip 720022

code 730031

MSRP 479,00 €



PVC FLOOR

tile, black, 50 x 50 x 0,7 cm
code 730021

MSRP: 14,95 €



PVC END STRIP

for floor tiles yellow, 1 pcs
50 x 13,5 x 0,7 cm

code 730022

MSRP: 13,50 €



PVC CORNER STRIP

for floor tiles yellow, 1 pcs
13,5 x 13,5 x 0,7 cm

code 730023

MSRP: 13,50 €

Torsten Nitsche
David Otto
Torsten Richter
Alexander Wolf
Mario Drechsel (PLZ 10-15, 02/03)
Friedhelm Metternich (PLZ 4, 5)
Bernhard Teuscher (PLZ 7, 88/89)
Christian Brendel (PLZ 80-87999, 90, 92-94)
Toni Grell (PLZ 95/96, 98/99, 0)
Lukas Brunner (AT)

+49 36203 614 - 31
+49 36203 614 - 43
+49 36203 614 - 40
+49 36203 614 - 45
+49 016 295 76 676
+49 178 780 03 24
+49 174 645 07 38
+49 173 675 36 44
+49 172 522 22 46
+43 664 222 45 06